

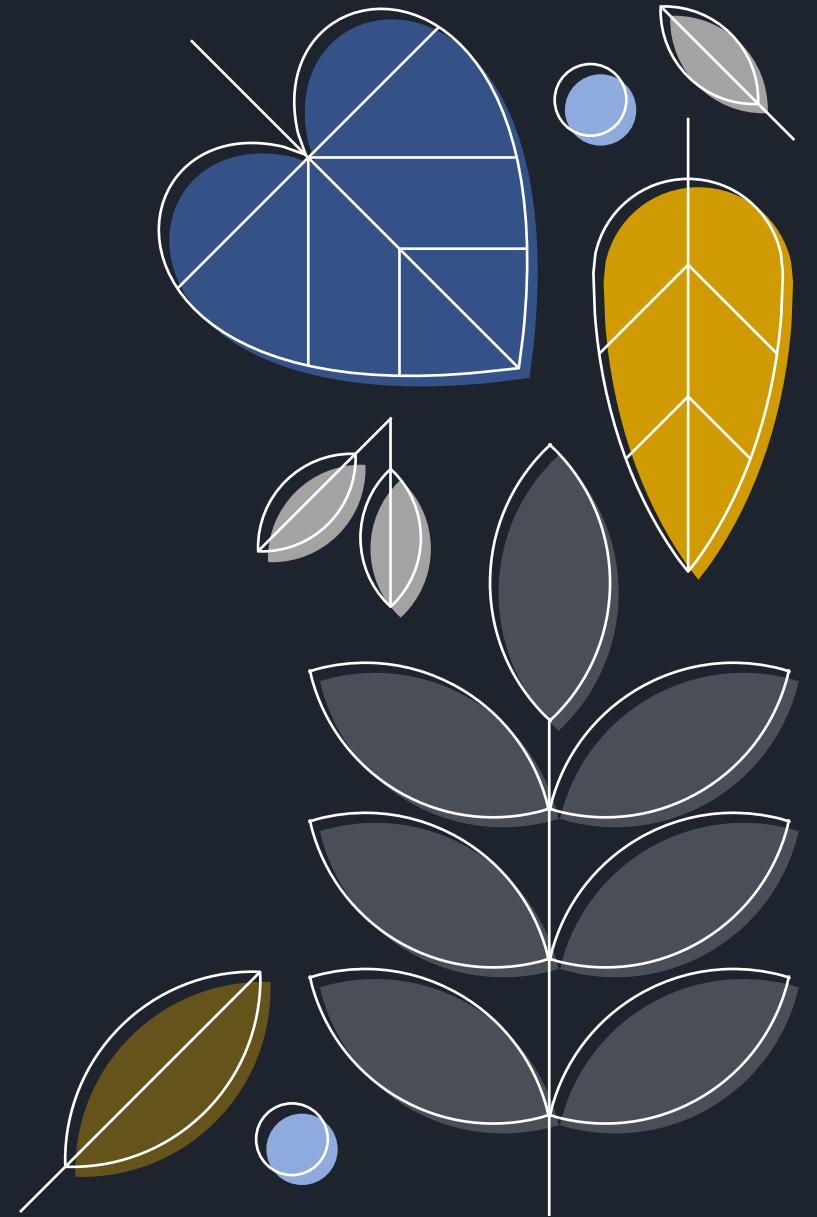
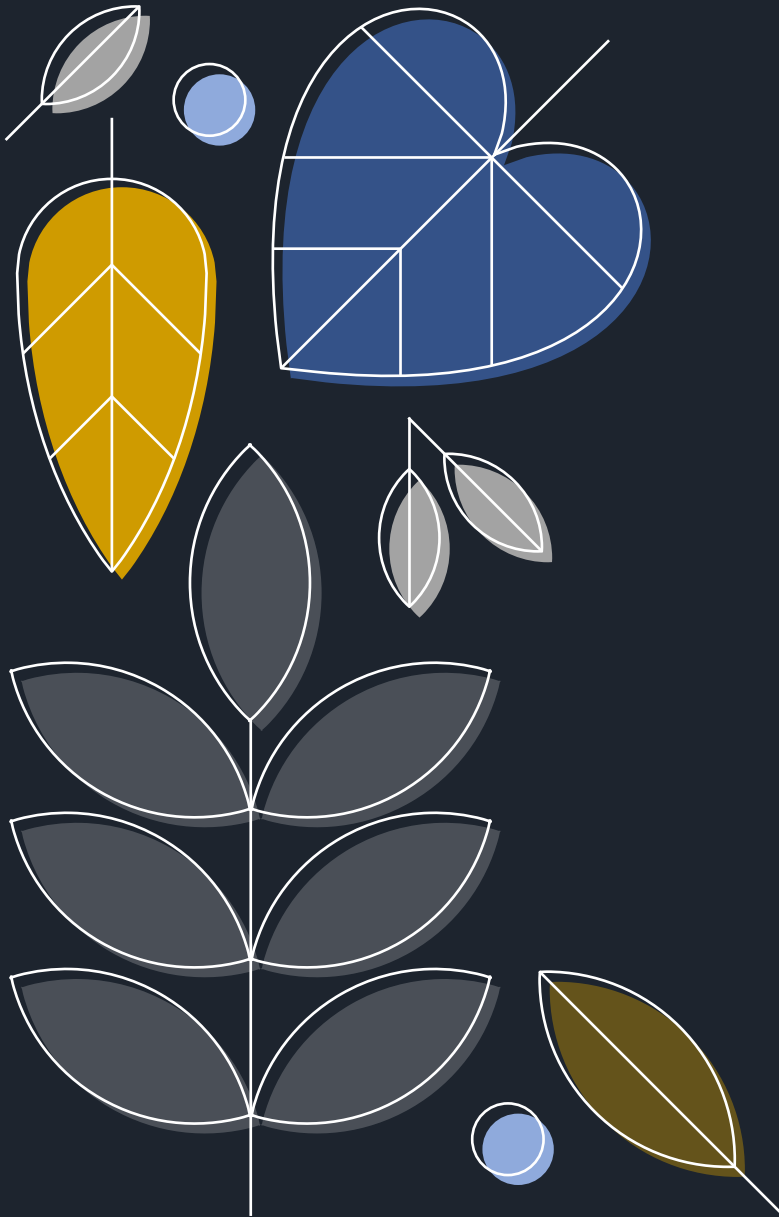


DR CHRIS JONES

BrEPS Seminar Series

May 2022

@CRJonesPsych



Apologies if dog walker arrives while I am talking

WHO AM I?

- Social & Environmental Psychologist with interests in PEB & Technology Acceptance

1) PEB

- Spillover/Rebound → Moral/Self-licensing → Compensatory Green Beliefs

2) ENERGY

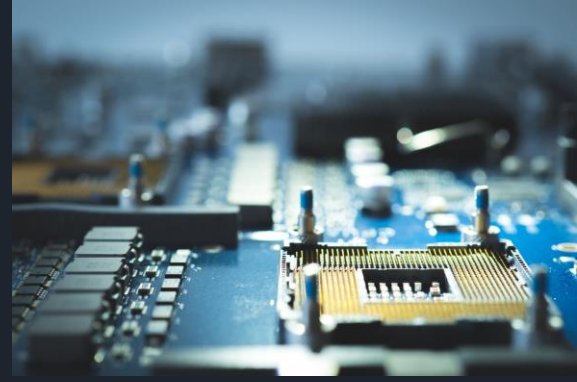
- SUPPLY: Fusion, Fission, Energy Storage, Wind Power, CCUS
- DEMAND: Smart Homes/Technologies

Sheffield → Surrey → Portsmouth!

[Christopher R. Jones - Google Scholar](#)



IS THE FUTURE OF LIVING SMART?



- Smart Living is a trend encompassing advancements that give people the opportunity to benefit from new ways of living.
- It involves original and innovative solutions aimed at making life more efficient, more controllable, economical, productive, integrated and sustainable.
- This is a trend that covers all the aspects of day to day life, from homes and workplaces to the manner in which people are transported within cities.
- Smart Living involves improved standards in several aspects of life, whilst striving for efficiency, economy and reduction of the carbon footprint.
- Implies adoption and use of new technologies and the sharing of data on how we live our lives

WHAT IS A SMART HOME?

- A smart home refers to a convenient home setup where appliances and devices can be automatically controlled or controlled remotely from anywhere with an internet connection using a mobile or other networked device (e.g. iPad).
- Devices in a smart home are interconnected through the internet, allowing the user to control functions such as security access to the home, temperature, lighting, etc., remotely.

Source: Hayes, 2022

"Smartification" is nothing new...



CONNECTED LIVING DEMONSTRATOR

The University of Surrey is working in partnership with MyGlobalHome to trial and demonstrate a state-of-the-art modular, smart home concept on the University campus.

UniS is studying...

Pre- and post-occupancy perceptions & behaviour

Air quality monitoring and performance

The factors affecting the propagation of demos.

[MyGlobalHome 'Connected Living' Demonstrator | University of Surrey](#)

CITIZENS' JURY – DISCUSSION GRENADES!

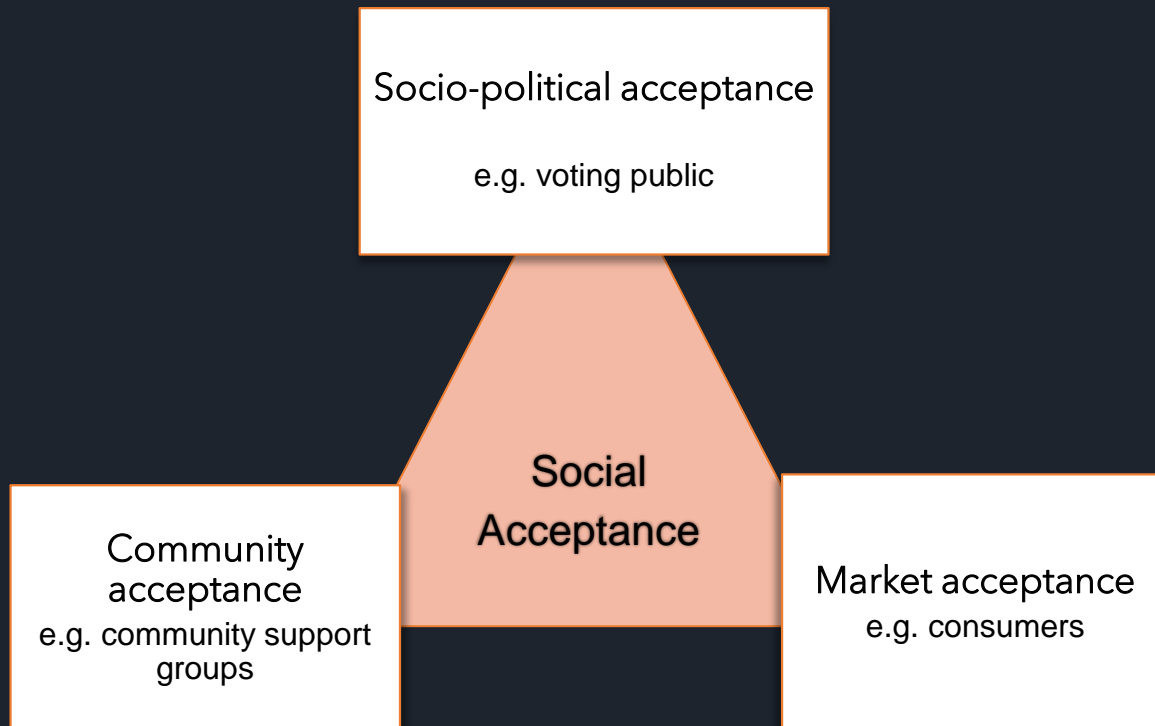
- STATEMENT 1: Smart living will require data-sharing - this is okay provided that the data is used to help people live better lives?
- STATEMENT 2: Smart homes could monitor your lifestyle and living environment and identify areas for improvement. We should be willing to cede control to our home to make more decisions about how we should live of lives?

1. *Public good: assistive living & consumer needs*
2. *Data ownership and governance*
3. *Trustworthiness, transparency, and data quality*

WHY IS THIS ULTIMATELY IMPORTANT?

- Triangle of social acceptance

Wustenhagen et al. (2007)



Publics can and do influence fate of technologies at local, regional and national levels.

There is a current push for more *upstream, participatory engagement* with RDD&D of new technologies.

The future...

- GasNetNew (w/ Bham, Nottm, Lboro)
- FEVER (w/ Surrey, Soton, Sheff)
- ACCESS (w/ everyone!)

THANK YOU.

*“ONCE A MEMBER OF THE EPRG ALWAYS A MEMBER OF THE
EPRG...THERE IS NO ESCAPE” (B. GATERSLEBEN)*

c.r.jones@surrey.ac.uk / chris.jones1@port.ac.uk